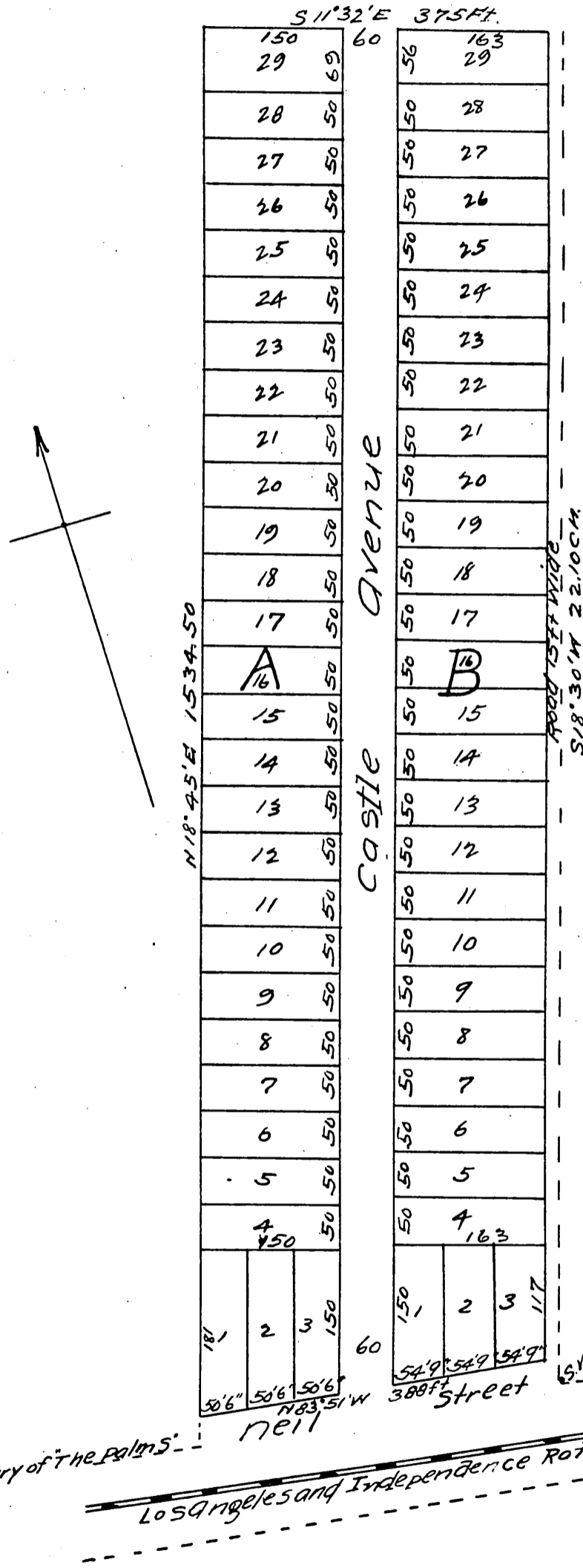


MAP

OF
The Palm City Tract.
Los Angeles County
Scale 100 feet to one inch.



7.50 ch to the West boundary of The Palms

a full, true and correct copy of the original.
Reduced to the scale of 150 feet to one inch,
recorded April 5, 1887 at 4 o'clock P.M.
at request of A.G. Hinckley.

Frank A. Gibson County Recorder
By Leo Bugbee Deputy.