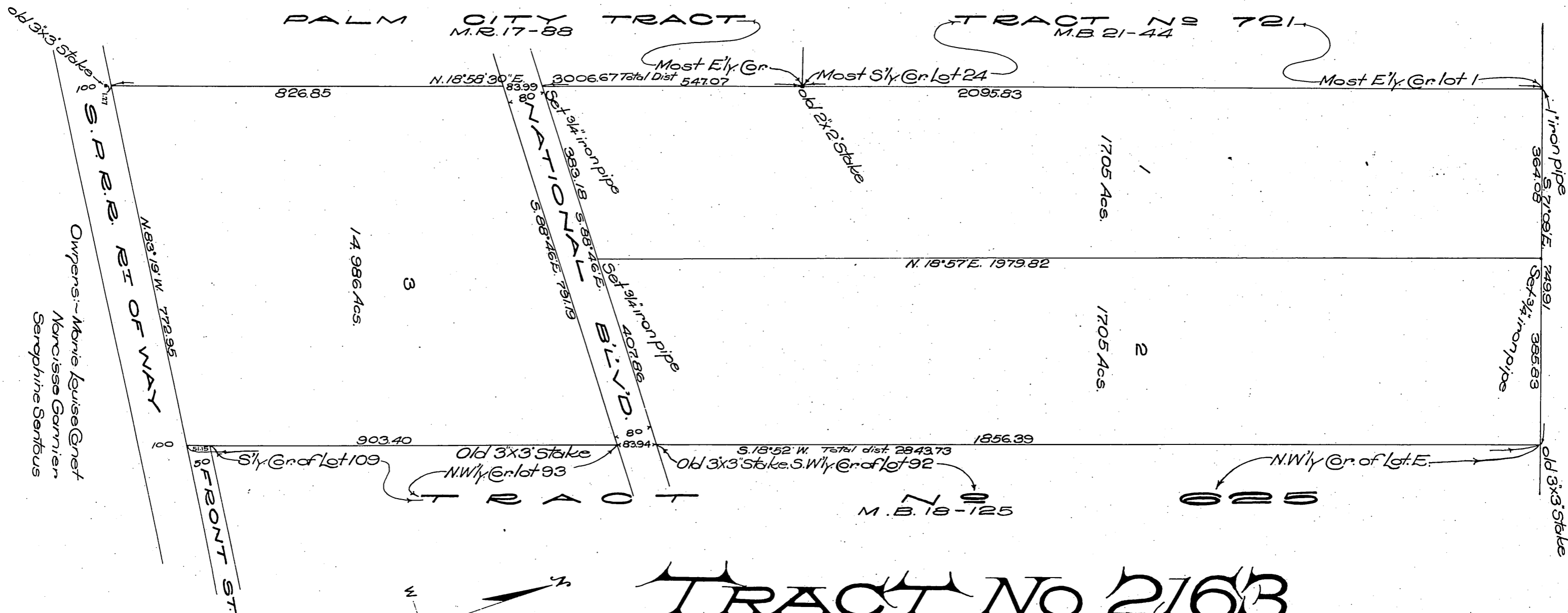


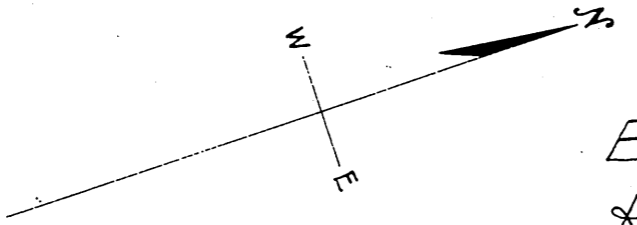
216
16



TRACT No. 2163

Being a Subdivision of a portion of the Rancho Rincon de los Bueyes as per map recorded in Book 1 page 207 of Patents Record of Los Angeles Co. Cal.
 Surveyed Jan. 1913 J. A. Bernal Sur. & C. E.
 Scale 200' = 1"

Front St. changed to Exposition Blvd. D. 13-181 R. B. 27-370



Recorded Feb. 20, 1913.

A-94
S4122

© W. A. E. T.