

Section 1, Page 9

## 417 Persons Lived in Vast Area in 1880

When the United States census was taken in 1880 the west city limits of Los Angeles were located at Hoover St., and the entire valley and coastal plain west of the city was known as Ballona Township. It stretched along the coast from the Ventura County Line to Redondo Beach. The census takers found that 417 persons lived in this vast area.

The first development of the valley began when Sen. John P. Jones of Nevada subdivided the town of Santa Monica in 1875. Jones also built the area's first railroad, the Los Angeles and Independence, which runs through the local community along Exposition Blvd. and today is known as the Pacific Electric Air Line.

The second community development in the valley was a subdivision known as "The Palms," recorded in 1886 on 500 acres of the former Rancho La Ballona. Next came Hollywood in 1887, and Barrett Villa was platted in 1896. This became Sawtelle and later was changed to West Los Angeles.

**Two School Districts**  
There were originally only two school districts west of Los Angeles, Cienega and La Ballona, but development of the valley caused these to be cut into several smaller districts. Santa Monica was cut from La Ballona and in 1888 the Palms school district was also created out of La Ballona. It included much of the present day University or Westwood area and most of Culver City.

As development continued, Ocean Park, Beverly Hills and Venice came into existence and the old school districts were further cut up and finally eliminated entirely through annexation to incorporated cities.

When Harry Culver began his development in 1913 his first tract was a resubdivision of 30 acres of Palms and 60 acres of the adjoining Rancho Rincon de Las Bueyes, all in the Palms precinct of Los Angeles County and the Palms school district. He called his tract "Culver City" and as he was backed by wealthy men in control of the Pacific Electric Railway he had no difficulty in getting a new railroad station built and his unique promotion methods were so successful that it looked for a time as if the new development would engulf the old settlement and the new name displace the old name of Palms which had already been established 27 years.

To combat this possibility local civic leaders started the move to annex Palms to Los Angeles. It took two elections to get Palms into the big city and it was later contested in the courts due to certain irregularities in the election ballots, but the courts upheld the annexation.

**Incorporated in 1917**  
When the balance of the com-  
(Continued on page 7)

# 417 Persons Here in 1880

(Continued from Page 3)

community incorporated in September, 1917 as Culver City, the area was definitely legally split into two cities. This has proved to be a serious handicap through all the intervening years, and has undoubtedly delayed public improvements that might have been easily accomplished by a united district.

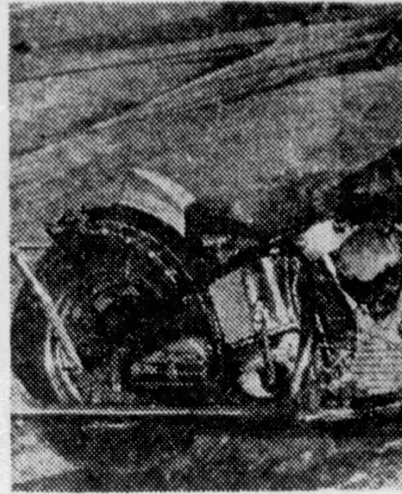
Though legally divided, Culver City and Palms have always been only one community geographically and will continue to have much in common. In time to come many people will wonder why ways cannot be found to reunite them in one as they originally were.

In 1880, when the western valley had 417 people, the entire Los Angeles County had only 33,319 population. Today Palms Station of Los Angeles postoffice serves in excess of that number of residents.

The former Ballona Township boundaries (described by present day place names) are roughly as follows: from Griffith Park to the University of Southern California, thence to Redondo Beach, thence along the coast to the county line west of Santa Monica and east along the summit of the Santa Monica Mountains to Griffith Park. This area now has nine incorporated cities plus a substantial portion of Los Angeles City

and large blocks of county area. It is conservatively estimated to have more than one thousand times the population it had in 1880.

## CHUC Motorcycle



SALES

P A F

10413 Washi  
Phone ARd